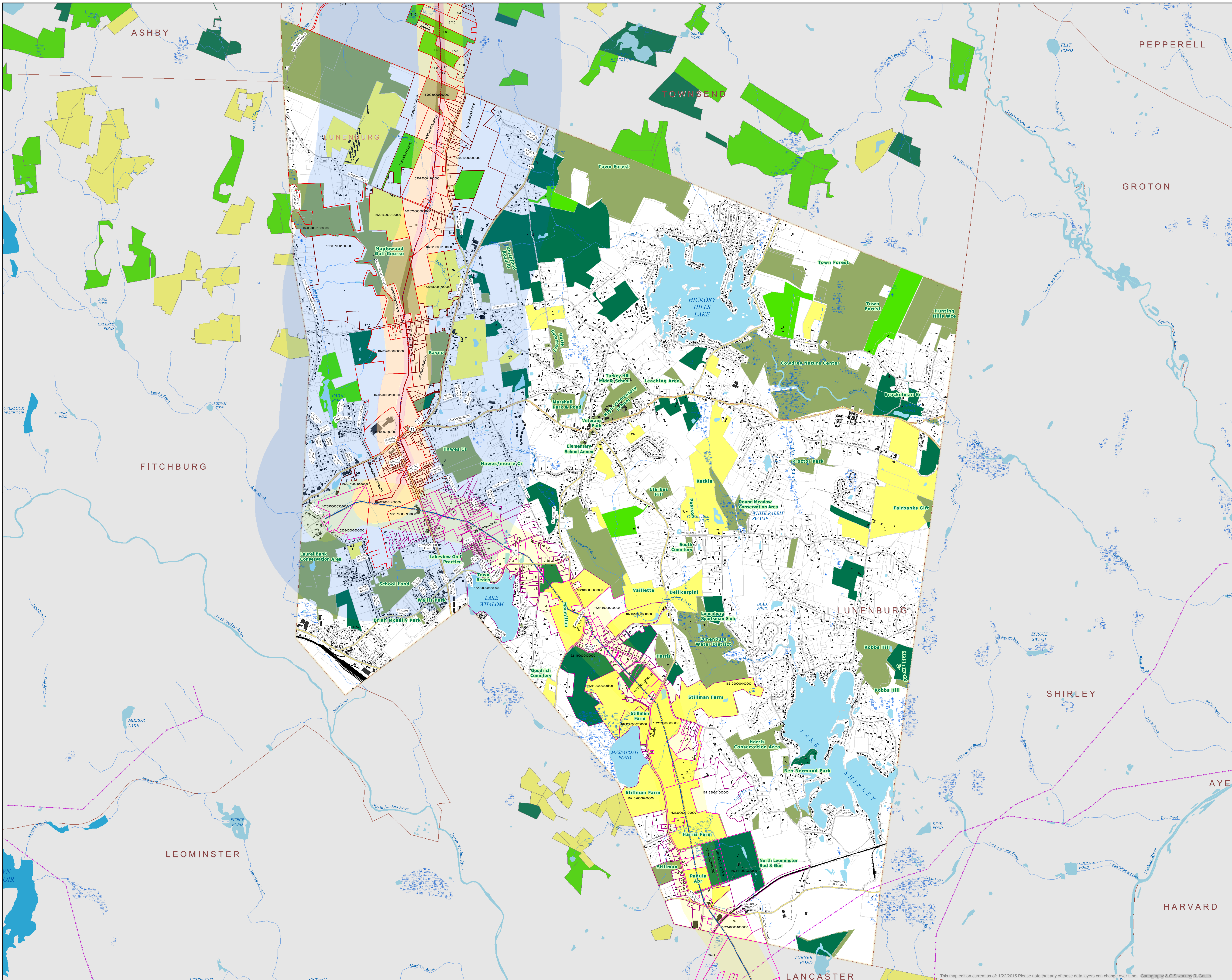


Parcels Potentially Affected by TGP/Kinder Morgan Gas Pipeline in LUNENBURG, MA.



LEGEND

- KM Pipeline (12/2014) Route*
- Pipeline Profile (09/2014) Route**
- Connector Pipeline (Existing)

Parcels within 1000 ft. in Mass.

- Crossed by pipeline or lateral
- Within 1000 ft. of pipeline or lateral
- Crossed by connector
- Within 1000 ft. of connector

Distances from Pipeline (transparent)

- ±/- 200 feet
- ±/- 1000 feet
- ±/- 1 mile

Existing Transmission Lines by Type

- Pipeline
- Pipeline Arbitrary Extension
- Powerline
- Powerline Arbitrary Extension

Building Structures

- from 2011 - 2013 orthophotos

Chapter 61 Conservation Parcels

- 61 A Agriculture
- 61 B Recreation
- 61 Forestry

Protected Open Space Lands

- Protected Open Space Lands (MA, 01/12/2015)
- Conservation & Public Lands (NH)

Road Classification

- Other Numbered Highway
- Major Road, Collector
- Minor Road, Ramp

Water Features

- Perennial Stream
- Pond, Lake, Ocean
- Reservoir
- Wetland

Methodology and Data Sources:

*Pipeline path: Kinder Morgan's Geographic Information System (GIS) shapefiles, dated 11/2014, merged by R. Gaultin into a single line that includes laterals. This line exactly matches the version filed with FERC 12/2014.

Other data layers: Commonwealth of Massachusetts (MassGIS) as developed by various agencies and municipalities. MA Open Space layer may have inaccuracies in both location and currentness; please report these to MassGIS for correction.

Chapter 61 parcels derived from state-wide "Level 3 Parcel Layer" based on land use codes, thanks to Massachusetts Office of Energy and Environmental Affairs for help with these queries. For more information see: <http://www.mass.gov/energy-research-and-tech/serv-and-support/application-service-office-of-geographic-information-massgis/datalayers/>

New Hampshire map layers mainly from NH GRANIT. (www.granit.unh.edu) Nashua Regional Planning Commission supplied that region's tax parcels.

**Tennessee Gas Pipeline Company, LLC (10/15/14) FERC public pre-filing application maps, as manually digitized from the PDF files by Northern Middlesex Council of Governments, Berkshire Regional Planning Commission, and R. Gaultin.

Disclaimer:

Data provided on this map is not sufficient for either boundary determination or regulatory interpretation. None of the authors or authorities providing individual data layers, nor R. Gaultin, make any warranty, expressed or implied, nor assume any legal liability or responsibility for the accuracy, completeness, or usefulness of the Geographic Information System (GIS) Data or any other data provided herein. The GIS data is illustrative only and should not be considered for any other purpose. The data does not take the place of a professional survey and has no legal bearing on the true shape, size, location, or existence of a geographic feature, property line, or political representation. Any use of this information is at the recipient's own risk. It's actually pretty good, though, notwithstanding the foregoing and abovementioned excruciatingly legalistic disclaimer.

1:16,000

0 0.25 0.5 Miles

Map edition current as of 12/2015. Please note that any of these data layers can change over time. Cartography & GIS work by R. Gaultin