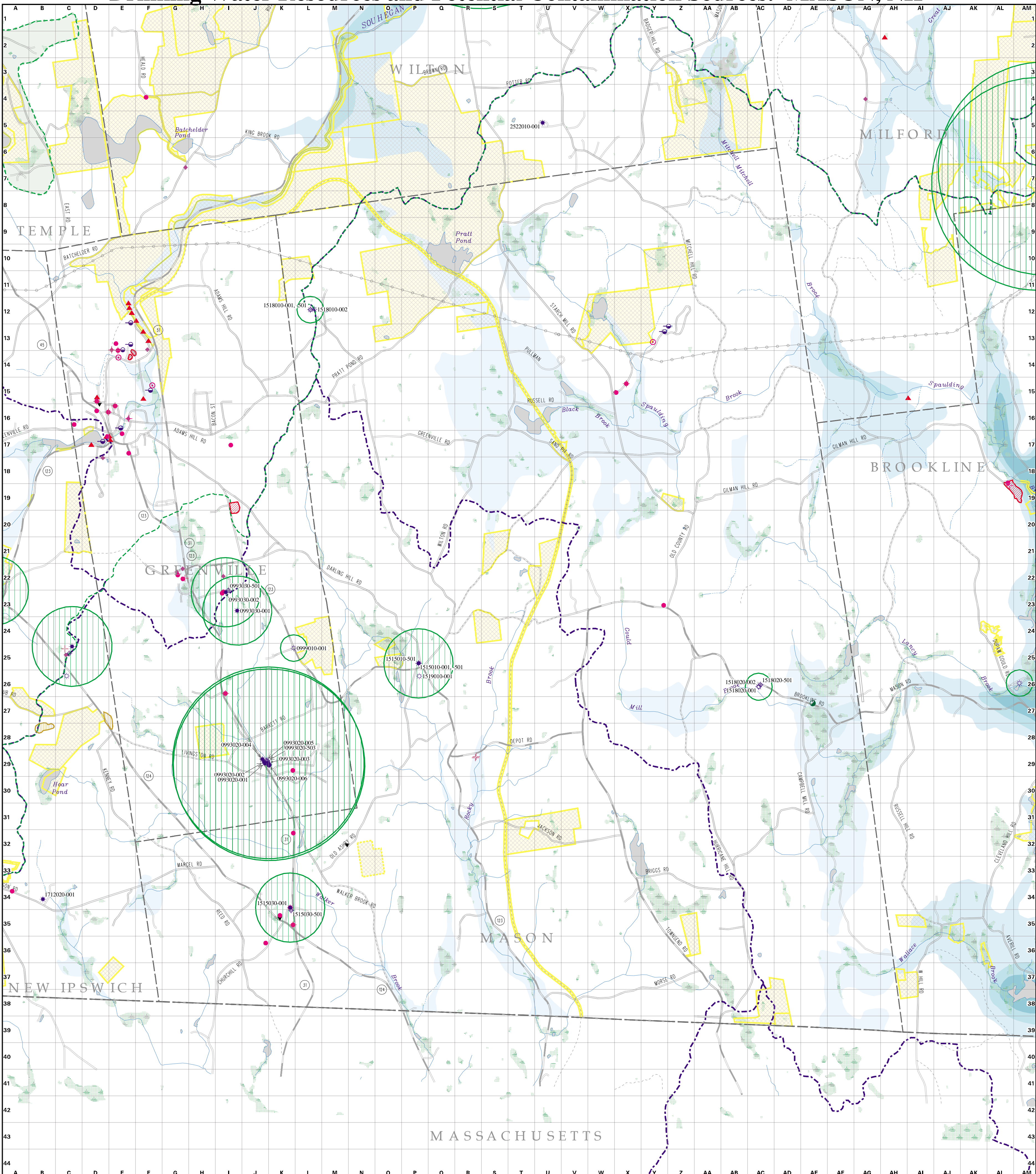


Drinking Water Resources and Potential Contamination Sources: MASON, NH

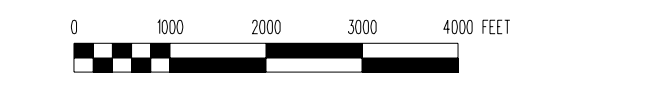
Legend



- Source Water Hazard Inventory Site
- ⊕ Above/or Underground Storage Tank Site
- ◆ RCRA Hazardous Waste Generator
- ⊠ Automobile Salvage Facility
- ▲ Point/Non-Point Potential Pollution
- ▼ Local PCS Inventory
- NPDES outfall
- Source Water Hazard Inventory Area
- Hazardous Waste Area (RCRA)
- Point/Non-point Potential Pollution
- Registered Water Users >20,000 gal/day
- Public Water Supply Source
- Transient Public Water Supply Source
- PWS Facility/Pump house
- USGS Water Quality Monitoring Well
- Drinking Water Protection Areas
- Bedrock or Artesian Well
- Gravel/Stratified Drift Well
- Grant eligible portion of SWPA (within 5 miles of surface intake)
- Transient System Well
- Surface Source Water Protection Area
- National Wetlands Inventory (if available)
- USGS Wetland
- USGS Lake or Pond
- Conservation/Public Lands
- Conservation parcel boundary
- (boundary uncertain/approximate)
- USGS Stream or Shoreline
- Subwatershed boundary (12-digit HUC)
- Primary highway
- Secondary highway
- Other road or street
- Railroad
- Power transmission line
- State boundary
- Town boundary
- Stratified Drift Aquifer (Transmissivity ft²/day)
- Less than 2000
- 2000 to 4000
- 4000 to 8000
- More than 8000
- Unable to contour

NOTES:

1. Source Water Hazard Inventory; Aboveground/Underground Storage Tank facilities - spatial data are maintained by NHDES and are part of an ongoing inventory. Include known and potential contamination sources subject to regulation by NHDES.
2. Resource Conservation & Recovery Act (RCRA) registered hazardous waste generators. Updated monthly.
3. Registered Automobile Salvage Yards. September 2006.
4. Local inventory sites self-reported through Waiver program, or located by DES-WSEB Staff during surveys. Updated monthly.
5. NPDES (National Pollutant Discharge Elimination System) outfall sites. Updated quarterly.
6. Hazardous Waste Areas (RCRA) include areas where hazardous waste has contaminated the groundwater. September 2006. (Subset of the Source Water Hazard Inventory).
7. Registered Water Users (more than 20,000 gallons per day) NHDES September 2006.
8. Source Water Protection Areas and Public Water Supply data developed and maintained by the NHDES WSEB. Updated quarterly. Updated quarterly; but delineation of Source Water Protection Areas is ongoing. Public water supply points updated monthly.
9. Conservation/Public Lands developed and maintained by the Society for the Protection of NH Forests; and NH GRANIT at Complex Systems Research Center, UNH. May 2006.
10. Stratified Drift Aquifer data developed by the US Geological Survey in cooperation with NHDES Water Division. (1:24,000)
11. Water/Sewer service areas (if shown) developed by NHDES-WSEB (General service area only - not represent actual pipelines)
12. Water Well Inventory (if shown) - private wells installed since 1994; approx. 30% field located. NHDES September 2006. Not updated as frequently as the Well Completion Report data.
13. Hydrography, transportation, and political boundaries from USGS 1:24,000-scale Digital Line Graph data provided by NH GRANIT at Complex Systems Research Center, UNH.



The coverages presented are under constant revision as new sites or facilities are added. They may not contain all of the potential or existing sites or facilities. NHDES is not responsible for the use or interpretation of this information. Not intended for legal purposes. ** SEE ACCOMPANYING REPORT FOR SITE INVENTORY LISTING. **

Map prepared December 7, 2006 NHDES-WSEB